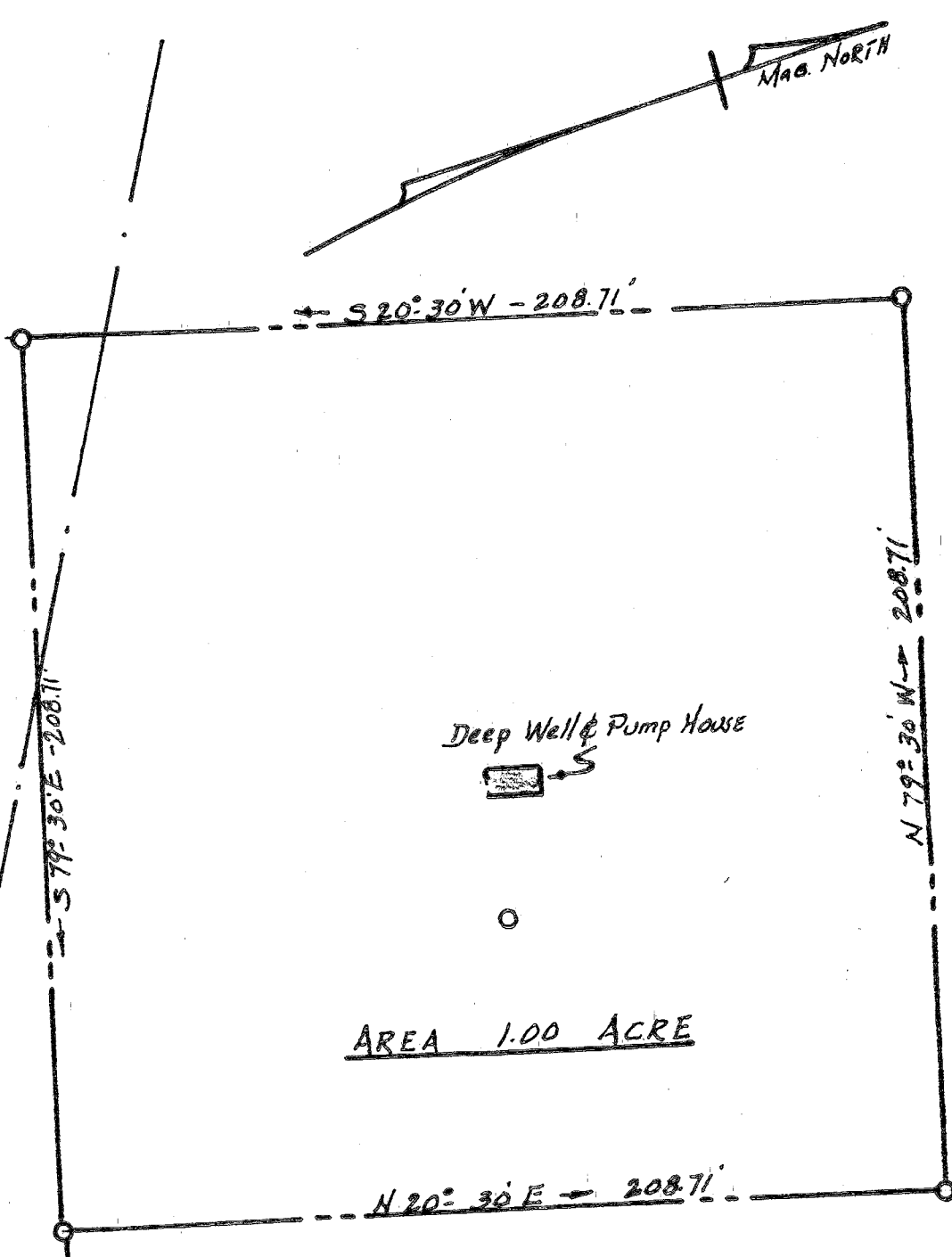


CAROLINA POWER & LIGHT CO.
HIGH VOLTAGE LINE



Deep Well & Pump House

AREA 1.00 ACRE

PROPERTY OF
SAPONA MILLS INC.

CEDAR FALLS-FRANKLINVILLE TOWNSHIP

RANDOLPH CO. N.C.

SCALE 1" = 40'

OCT. 1939

RICHARD H. MOORE - ENGINEER
ASHEBORO, N.C.